

Customer :

customer

Customer part :

customer part

Comment :

Comment

S1=1.71

S2=1.69

Tmax=438

Tp S2=477.0

PI=0.5

HI=127

Sample =1788.30

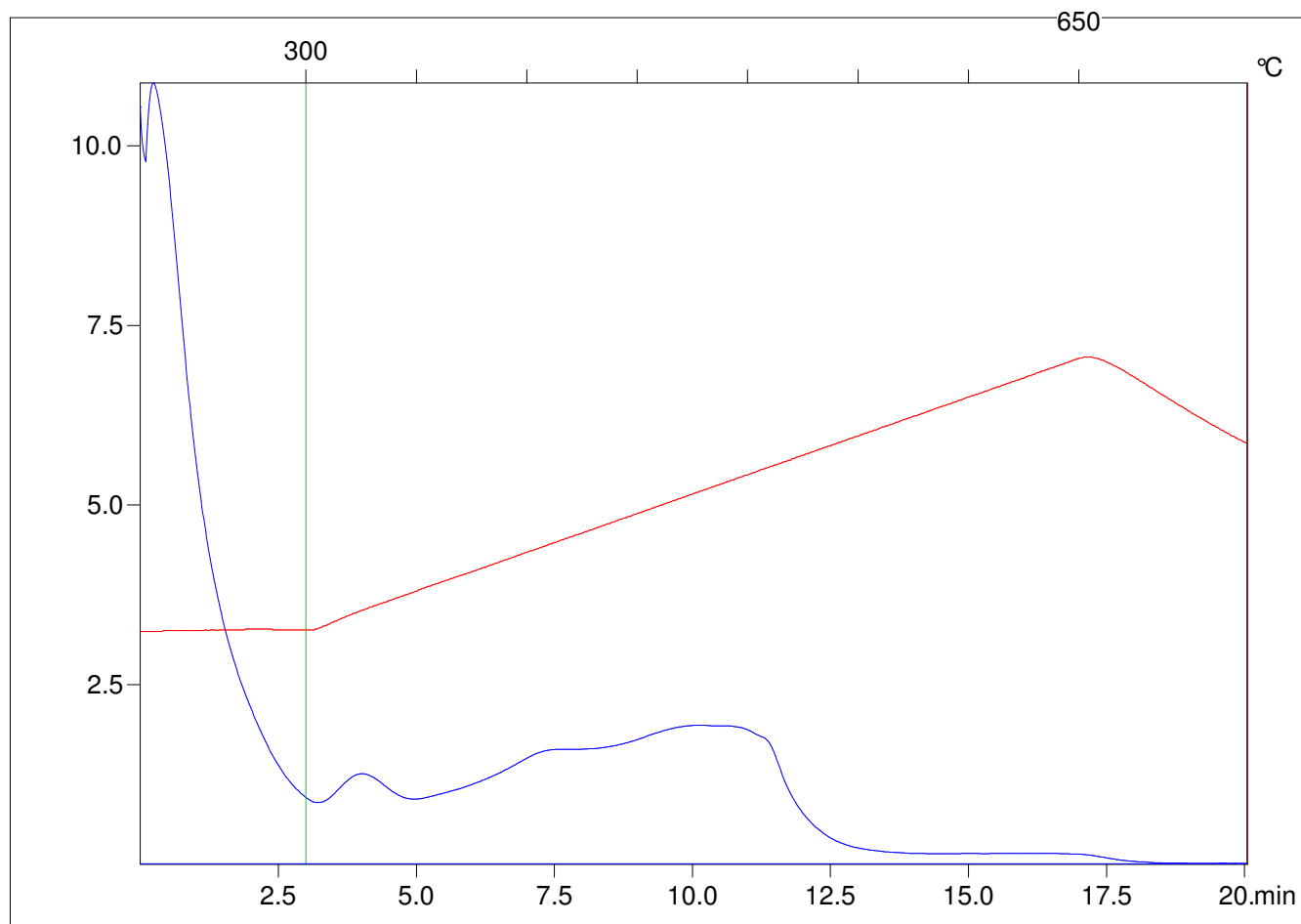
Method =Bulk Rock

Cycle=Basic

KFID(10*9)=1444

Qty =70.7

TOC=1.33



C:\VINC\PK3_1792\PK084.R00 : FID pyrolysis graphic

State

Pyro Status

Oxi Status